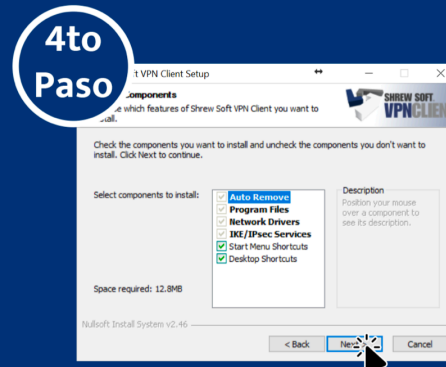
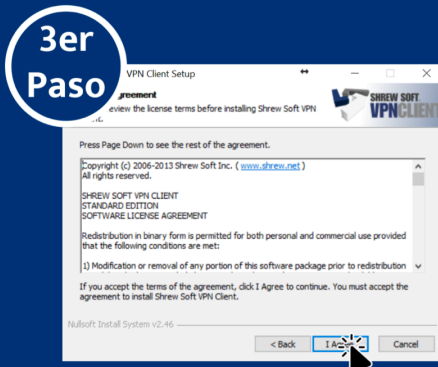




## Ejecutar el instalador vpn-client-2.2.2-release.exe



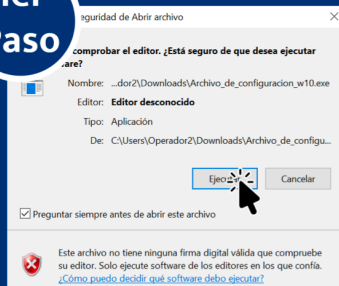


# Importar archivo de configuración

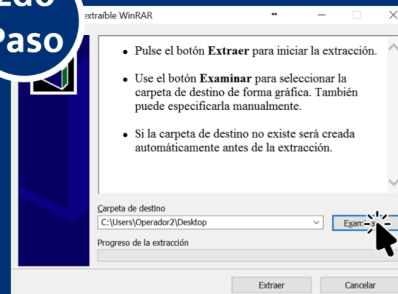
## Ejecutar Archivo\_de\_configuracion\_w10.exe



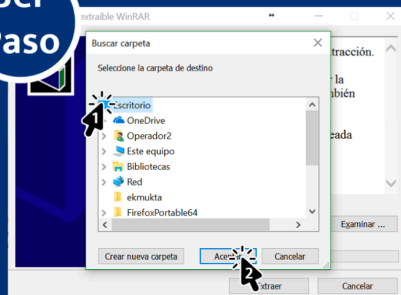
**1er  
Paso**



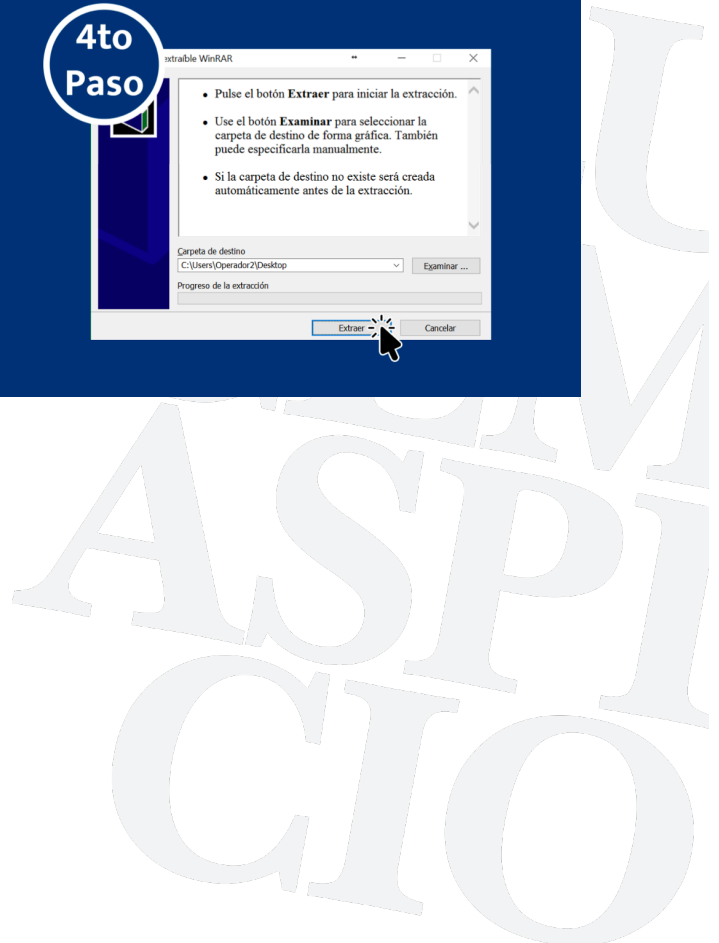
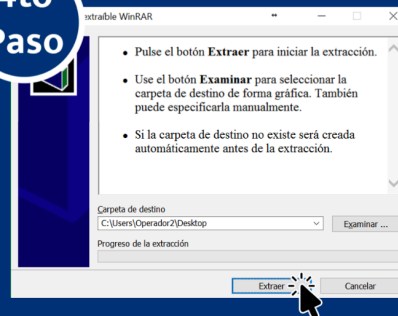
**2do  
Paso**



**3er  
Paso**



**4to  
Paso**

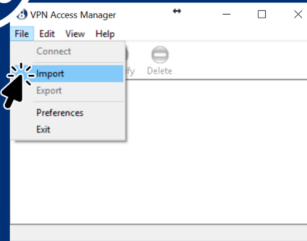




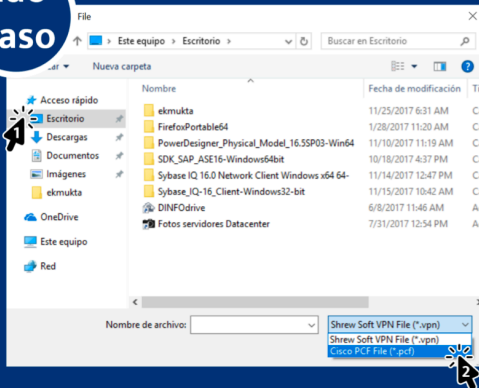
## Abrir Software VPN Access Manager



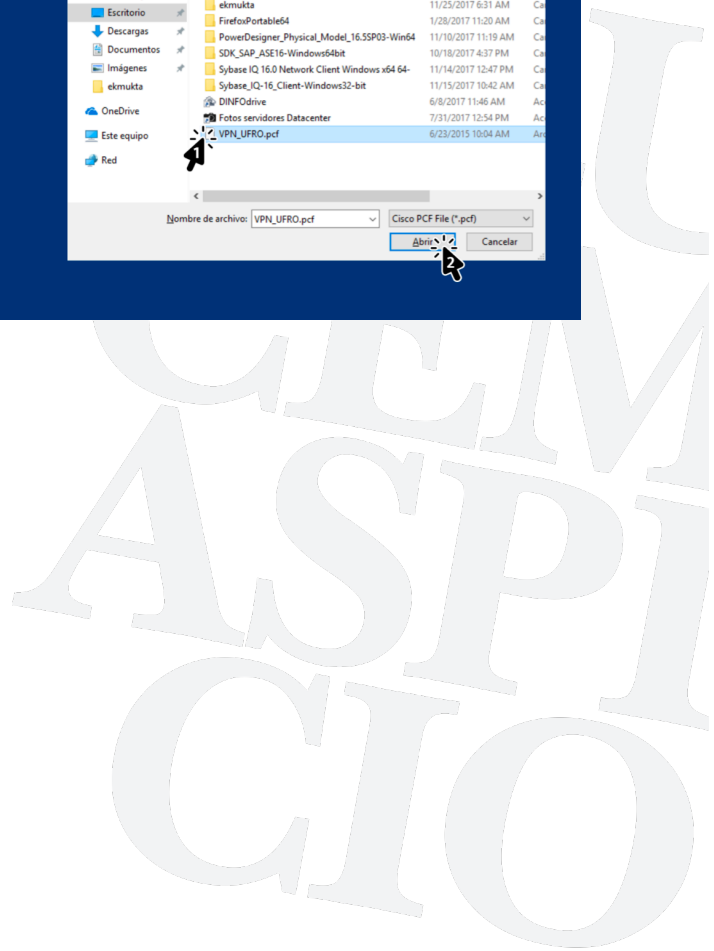
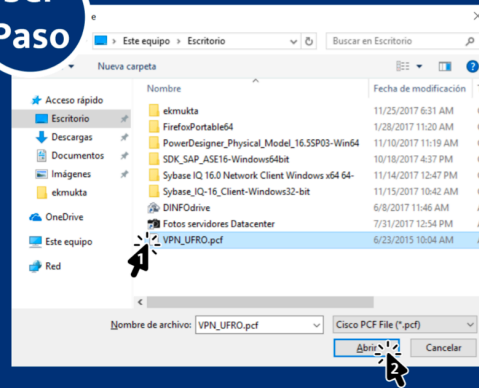
**1er Paso**



**2do Paso**

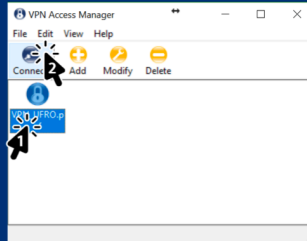


**3er Paso**

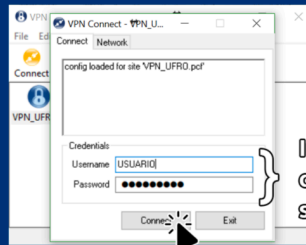


## Conectarse a la red VPN

1er  
Paso

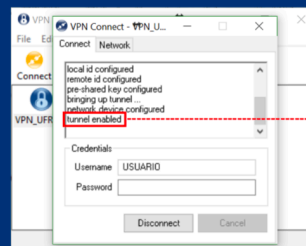


2do  
Paso



Ingresar el usuario y la contraseña  
que se envió a su correo luego de  
solicitar la cuenta VPN.

3er  
Paso



El Mensaje “tunnel enabled”  
indica que la conexión se realizó  
exitosamente

## Desconectarse de la red VPN

1er  
Paso

